



# Emilia-Romagna in figures

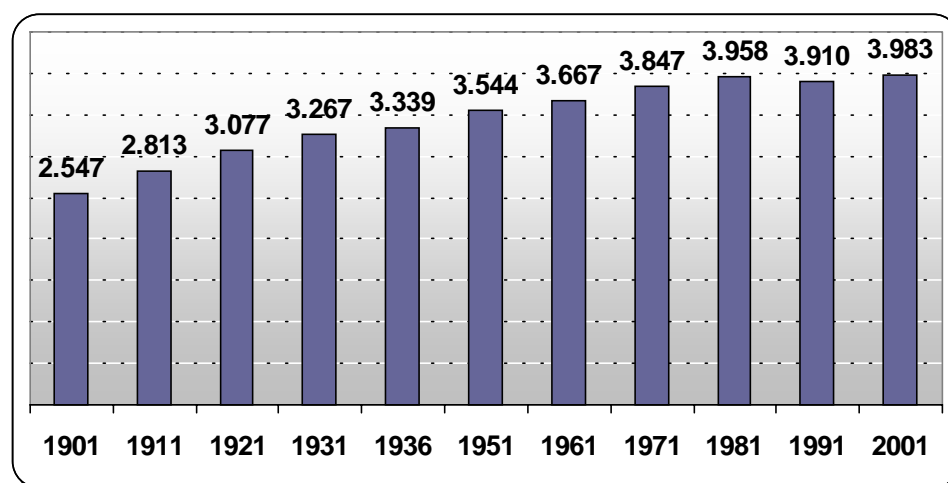
## Emilia-Romagna's numbers

### Main territorial and demographic data

<b>Territorial surface</b>	22.118 Km <sup>2</sup>
<b>Plains</b>	10.566 Km <sup>2</sup>
<b>Hills</b>	5.992 Km <sup>2</sup>
<b>Mountains</b>	5.560 Km <sup>2</sup>
<b>Highest mountain</b>	Monte Cimone (2.165 m)
<b>Longest river</b>	Po (652 Km)
<b>Provinces</b>	9
<b>Municipalities</b>	341
<b>Resident population (2003)</b>	4.080.479
<b>Number of households*</b>	1.652.425
<b>Population density</b>	184 inhabitants/km <sup>2</sup>

(\*) with reference to the census day (2001)

### Resident population with reference to the census days



### key points

**Chief town:**  
Bologna

**Provinces:**  
Ferrara  
Forli-Cesena  
Modena  
Parma  
Piacenza  
Ravenna  
Reggio Emilia  
Rimini

### Resident population:

Italian and foreign citizens registered in municipal Register Offices



## Resident population and population change by province; 2003

### key points

#### Natural balance:

difference between births and deaths of resident population occurred in the national territory over the year

#### Migration balance:

difference between new registrations in and removals from the Register Offices of resident population occurred in the national territory over the year

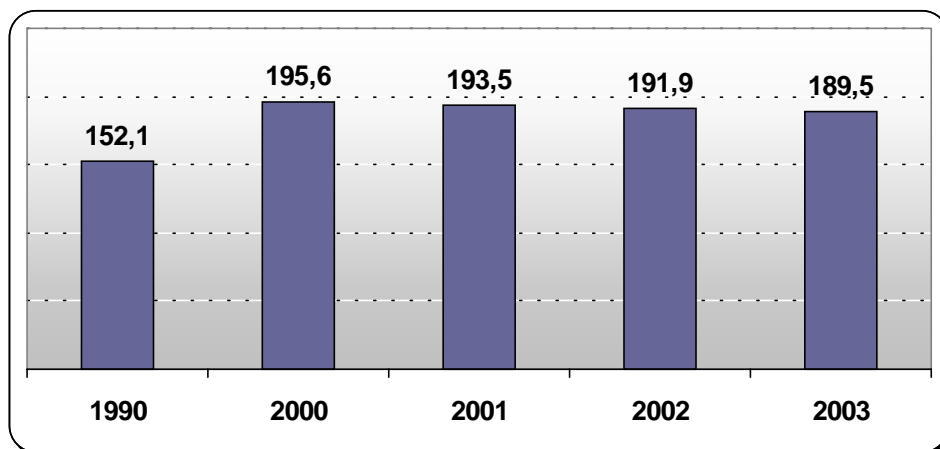
	Resident population	Density (inhabitants/kmq)	Natural balance	Migration balance
Bologna	934.983	250	-3.445	11.791
Ferrara	347.360	131	-2.233	5.568
Forli-Cesena	366.805	152	-868	5.428
Modena	651.996	239	-587	9.540
Parma	399.738	115	-1.911	4.867
Piacenza	270.946	103	-1.584	5.256
Ravenna	355.395	189	-1.449	5.651
Reggio Emilia	471.912	202	-276	9.551
Rimini	281.344	517	-87	5.047
Emilia-Romagna	4.080.479	184	-12.440	62.699

## Demographic indicators

### Ageing ratio

#### Ageing ratio:

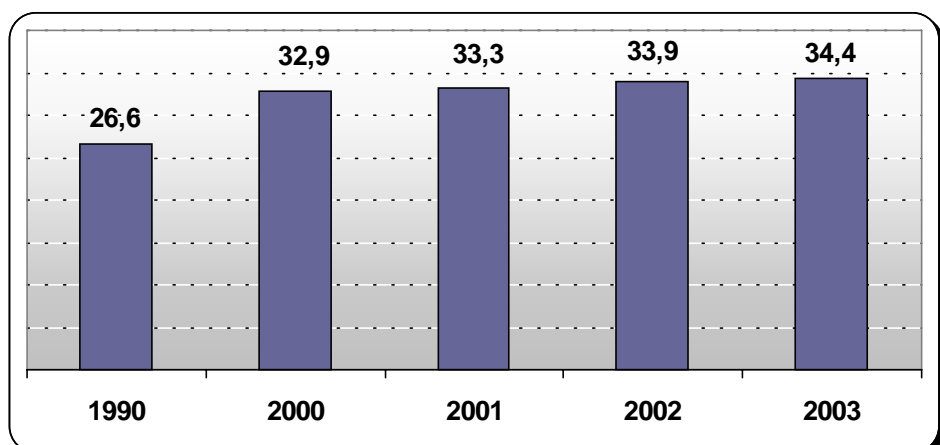
ratio of population aged 65 and over to population aged 0-14, per 100.



### Dependency ratio

#### Dependency ratio:

ratio of non-working age population (0-14; 65 and over) to working age population (15-64), per 100.



## Territory and environment

### Protected areas; 2003

	Kmq
national parks	308
national nature reserves	82
regional nature parks	472
regional nature reserves	17
other protected areas	1
total	881

### key points

#### Protected areas:

territory under protection and management regime, including geographical, geological or biological formations of relevant naturalistic or environmental value

### Environmental indicators in provinces; 2004

	Parks and gardens (mq per inhabitant)	Cars per 100 inhabitants	Municipal waste per inhabitant (kg per year)
Bologna	16,1	60,2	572,1
Ferrara	25,4	61,3	705,7
Forli-Cesena	16,5	62,1	727,2
Modena	20,1	63,9	578,7
Parma	13,4	62,1	615,1
Piacenza	13,7	60,6	683,3
Ravenna	17,3	65,6	759,4
Reggio Emilia	14,4	63,1	774,4
Rimini	11,0	61,9	837,8

#### Municipal waste:

- household waste, including bulky ones

- non-hazardous waste similar to municipal waste in type and quantity

- waste from street cleaning

- greens waste from parks and gardens

- waste from cemetery activities

### Meteorology; 2003

	Mean temperatures in Celsius degrees	
	the highest in summer	the lowest in winter
Piacenza	33,0	-0,2
Rimini	30,6	1,1



### key points

#### Average monthly consumption expenditure:

is calculated by dividing the total consumption expenditure by the number of households

#### Households' per capita income:

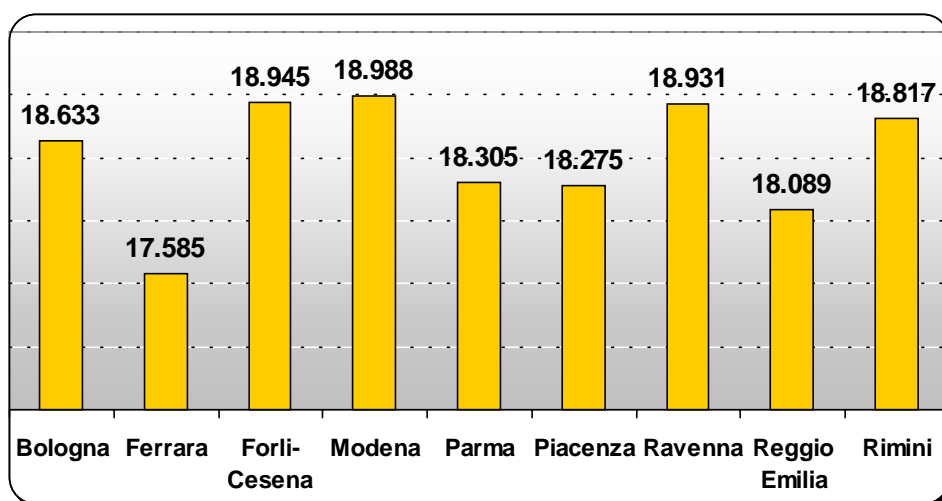
shows the resources that the families have for consumption expenditure and for saving

## Living standards

### Average monthly consumption expenditure; 2002

	in euro	%
Food:	388,2	15,8
• Bread and cereals	70,7	2,9
• Meat	91,3	3,7
• Fish	28,2	1,1
• Oils and fats	13,0	0,5
• Milk, cheese and eggs	53,4	2,2
• Potatoes, fruits and vegetables	70,6	2,9
• Sugar, coffee and groceries	25,4	1,0
• Drink	35,6	1,5
Clothing	148,4	6,0
Housing	646,9	26,4
Transport	362,6	14,8
Free time	118,4	4,8
Other things	789,5	32,2
Total	2.454,0	100,0

### Households' per capita income, in euro; 2002



#### Households' per capita income:

Emilia-Romagna 18.548  
Italia 15.032



## Education

### Schools, students and teachers by type of school; 2003/2004

	Pre-school education	Primary	Lower secondary	Upper secondary
Schools	1.468	1.045	439	358
Teachers	8.309	16.914	10.998	17.977
Students	96.882	158.359	97.293	143.594

### University University graduates\*; 2003

Faculty	University			
	Bologna**	Ferrara	Modena Reggio Emilia	Parma
Agrarian	307		26	70
Chemical	75			
Economics	3.330	98	554	694
Pharmaceutical	324	189	184	215
Legal	1.509	351	314	751
Engineering	1.886	332	542	456
Literary	1.638	274	338	690
Language	471			
Medical	726	294	387	258
Veterinary science	210			109
Psychological and teaching	1.447		33	
Scientific	945	261	179	335
Political and social	1.359			
Statistical	243			
Architecture and history of art	275	165		64
Physical training	159			
Total	14.745	1.964	2.557	3.642

(\*) Graduates with the "old" formula, the new "3+2" formula or the "unique" formula.

(\*\*) It includes faculties located in: Bologna, Cesena, Forlì, Ravenna, Rimini.

### key points

#### School system:

is divided into six levels:

- pre-school education
- primary
- lower secondary
- upper secondary
- post-secondary school (non-university)
- university

#### The reform of the university system:

as stated in Law n.127/97 and Law n. 4/99, academic courses are structured in two successive cycles, according to the so called "3+2" formula. The first three-year cycles leads to a 1st level degree-new programme-short course; the second one, lasting two years, enables students to achieve a 1st level degree-new programme-long course.

The "unique" formula programme course (5 or 6 years), equivalent to the old long-programme course, is still in force for architecture, civil engineering, pharmacy, dentistry, veterinary science and medicine



### key points

#### National Health service (NHS):

includes public hospitals (with the exception of psychiatric centres) and credited private clinics (with the exception of private rehabilitation centres as per Section 26 of Law n.833/78)

#### Manufacturing activities:

these include food industry, textile and clothing industry, leather industry, wood industry, print and publishing industry, rubber and plastics industry, manufacturing of electric machinery and electric and optical equipment, oil industry, chemical industry, non-metalliferous and metalliferous ore processing industry, mechanical industry and transportation industry

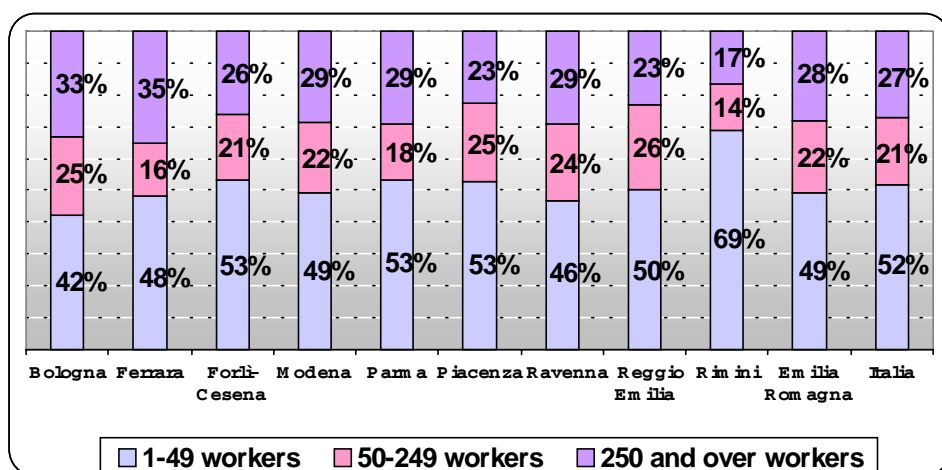
## Health

### National health service; 2001

	Hospitals and clinics	Beds per 1000 inhabitants	Doctors per 1000 inhabitants
Bologna	25	6,0	2,7
Ferrara	8	4,9	2,1
Forli-Cesena	11	4,9	2,1
Modena	8	3,6	2,0
Parma	9	5,7	2,1
Piacenza	7	4,3	1,7
Ravenna	8	5,1	2,2
Reggio Emilia	5	3,8	1,4
Rimini	7	4,4	1,8
Emilia-Romagna	88	4,8	2,1
Italia	1.410	4,6	2,0

## Economy

### Manufacturing value added (section D ateco) in base prices by firm size; 2001



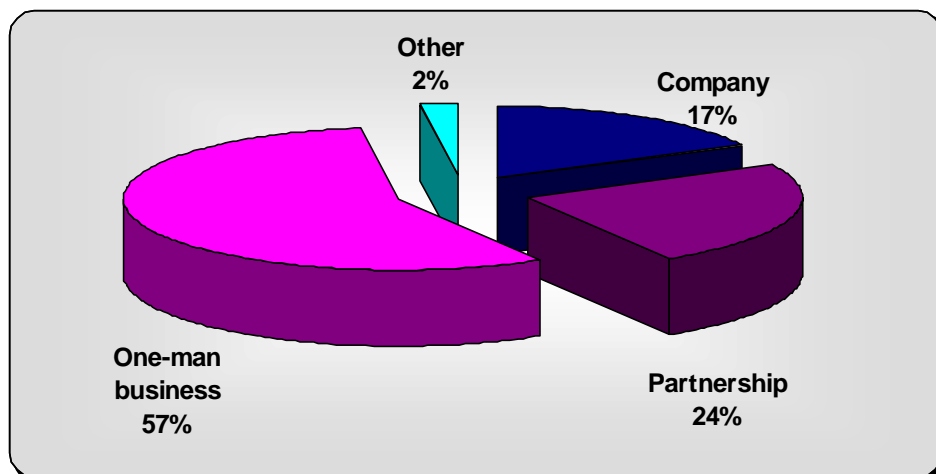
## Value added by branch; 2003

	Agriculture	Strictly industrial activities	Construction	Services	Total (less sifim*)	Per capita income (in euro)
Bologna	2%	25%	5%	69%	25.585,1	27.486,9
Ferrara	6%	22%	6%	67%	7.338,0	21.227,0
Forli-Cesena	4%	19%	6%	70%	8.526,1	23.389,7
Modena	2%	37%	6%	55%	17.338,8	26.777,3
Parma	3%	31%	5%	61%	10.426,8	26.180,9
Piacenza	5%	23%	7%	65%	6.002,2	22.303,9
Ravenna	4%	18%	6%	72%	8.559,7	24.228,4
Reggio Emilia	3%	35%	7%	54%	11.087,0	23.727,1
Rimini	2%	16%	5%	77%	6.515,1	23.363,2
Emilia-Romagna	3%	27%	6%	64%	101.379,0	24.998,8
Italia	3%	22%	5%	71%	1.165.478,7	20.232,4

(\*) sifim: financial and monetary broking service

The percentages referred to branches include sifim

## Registered firms by legal form; 31/12/2004



## key points

### Value added:

value of output less the value of intermediate consumption



## key points

### Registered firms by branch; 31/12/2004

	Agriculture	Strictly industrial activities	Construction	Services	Total
Bologna	12.089	13.548	12.349	58.756	96.742
Ferrara	10.143	4.255	5.033	19.257	38.688
Forli-Cesena	9.589	5.780	6.234	23.216	44.819
Modena	10.589	14.463	10.960	39.297	75.309
Parma	7.313	7.144	8.180	24.029	46.666
Piacenza	6.688	3.861	4.576	16.155	31.280
Ravenna	10.252	4.517	5.487	21.924	42.180
Reggio Emilia	8.772	9.793	12.145	25.916	56.626
Rimini	3.144	3.909	4.586	25.279	36.918
Emilia-Romagna	78.579	67.270	69.550	253.829	469.228
Italia	985.154	761.566	771.432	3.479.597	5.997.749

### Tourism

#### Arrivals and presences in the accommodation establishments by province; 2003

##### Arrivals:

number of guests spending at least one night in the accommodation establishments

##### Presences:

number of nights spent by guests in the accommodation establishments

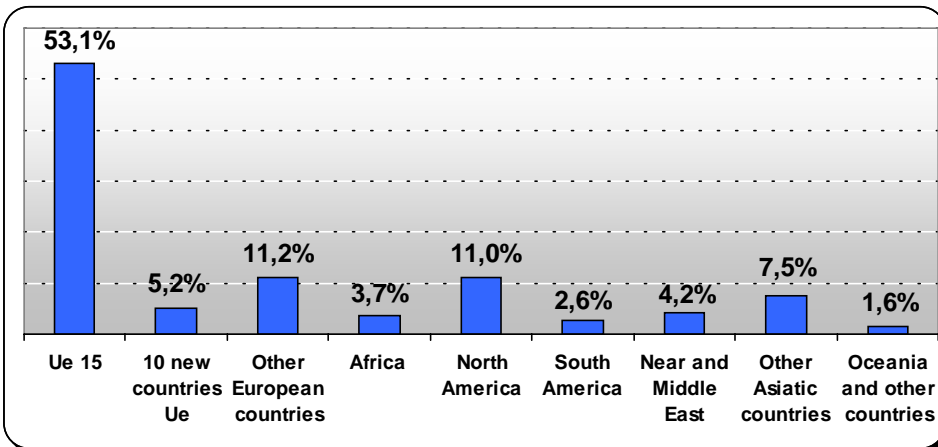
	Italians		Foreigners	
	Arrivals	Presences	Arrivals	Presences
Bologna	907.467	2.362.909	411.332	990.293
Ferrara	268.046	1.286.311	140.283	984.408
Forli-Cesena	587.179	3.950.174	164.559	1.068.904
Modena	365.193	1.030.302	147.158	344.656
Parma	377.694	1.438.006	117.329	264.201
Piacenza	115.175	373.165	63.063	158.768
Ravenna	882.399	5.017.876	204.654	1.223.859
Reggio Emilia	201.572	601.133	62.547	177.219
Rimini	2.147.591	11.999.796	529.477	3.349.322
Emilia-Romagna	5.852.316	28.059.672	1.840.402	8.561.630
Italia	47.718.528	204.759.892	35.006.124	139.653.425





## Foreign trade

### Export by geographical area; 2004

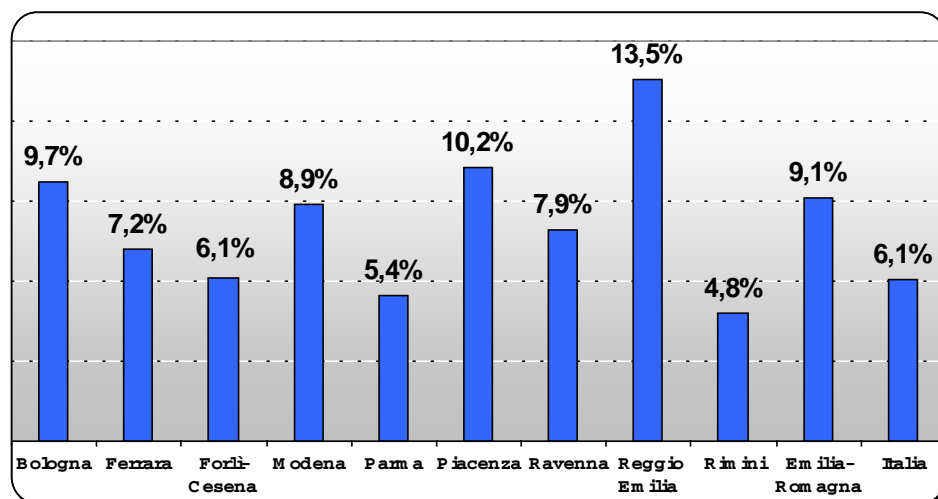


### key points

#### Foreign trade:

foreign trade statistics are obtained from two surveys that covered Italian trade with EU countries and with other countries respectively

### Export variations; 2003/2004



### First ten foreign buyers for export; 2004

- France
- Germany
- United States
- Spain
- United Kingdom
- Switzerland
- Belgium
- Low Countries
- Russia
- Austria

### First ten branches for export; 2004

- Other machines of general employment
- Tiles and slabs of ceramics
- Other machines for special employment
- Machines for mechanical energy
- Other items of clothing
- Motor vehicle accessories
- Motor vehicles
- Machine tools



## Labour market

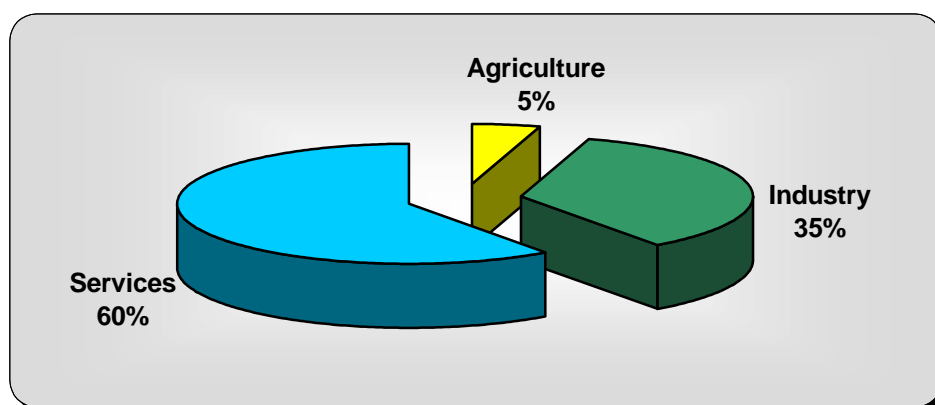
### Activity rate (15-64 years) by sex; 2004

	Males	Females	Total
Bologna	77,1	65,9	71,5
Ferrara	79,5	65,5	72,5
Forli-Cesena	77,7	61,9	69,9
Modena	78,5	66,6	72,6
Parma	79,0	61,7	70,4
Piacenza	76,6	54,5	65,8
Ravenna	78,2	61,7	69,9
Reggio Emilia	81,3	64,2	72,9
Rimini	77,3	58,5	67,9
Emilia-Romagna	78,3	63,4	70,9
Italia	74,5	50,6	62,5

### Unemployment rate by sex; 2004

	Males	Females	Total
Bologna	2,6	3,6	3,1
Ferrara	3,1	5,7	4,3
Forli-Cesena	3,0	5,7	4,2
Modena	2,9	4,7	3,7
Parma	2,6	4,9	3,6
Piacenza	2,2	5,0	3,4
Ravenna	3,0	5,9	4,3
Reggio Emilia	1,0	5,0	2,7
Rimini	4,1	8,1	5,8
Emilia-Romagna	2,7	5,0	3,7
Italia	6,4	10,5	8,0

### Employees by branch; 2004



#### key points

#### Activity rate:

ratio of people belonging to labour force to total population aged 15 and over

#### Unemployment rate:

ratio of job-seekers (who sought employment in the 30 days before the survey) to labour force



## Professional structure according ISCO classification; 2003

	Employees %
Managers and directors	1,1
Scientific and intellectual jobs with high specialization	4,8
Technical jobs	22,0
Executive jobs concerning administration and management	13,3
Jobs concerning sales and services for families	14,4
Skilled workers	21,8
Operators	14,6
Unskilled workers	7,9
Total	100,0

### *key points*

#### **ISCO classification:**

identifies groups according to the knowledge and/or the abilities which are useful in working

## Pensioners, pensions and average yearly gross pension earnings; 2002

	Pensioners	Pensions	Average yearly gross pension earnings
Bologna	314.526	444.757	13.443
Ferrara	126.136	182.249	11.955
Forlì-Cesena	116.341	165.251	11.104
Modena	198.806	284.761	11.830
Parma	134.433	196.542	12.419
Piacenza	94.343	137.263	12.235
Ravenna	125.223	178.150	11.842
Reggio Emilia	145.439	212.764	11.784
Rimini	77.408	109.506	10.769
Emilia-Romagna	1.332.655	1.911.243	12.182



## key points

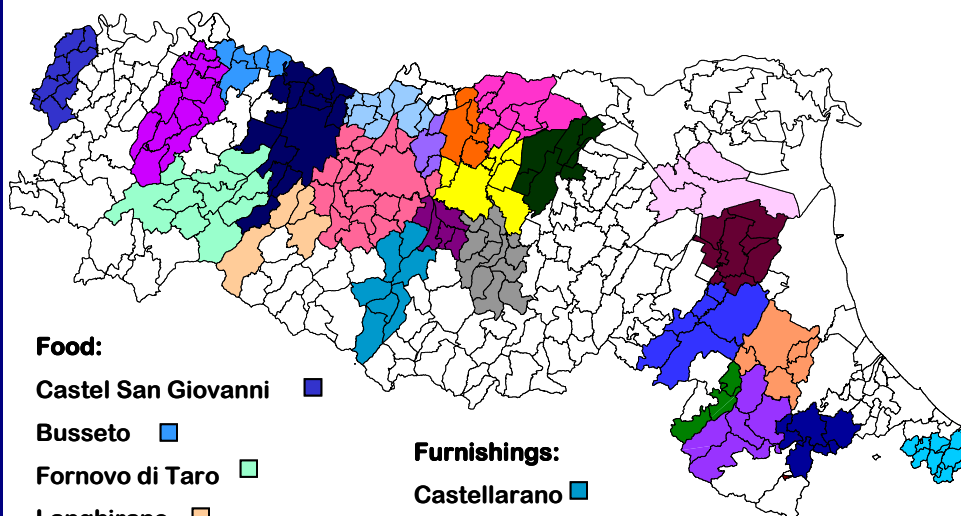
### Industrial district:

article n.36 of law n. 317 (5/10/91) describes industrial districts as: "territorial local areas characterised by high concentration of small firms, with particular reference to the relation between number of firms and resident population, and also with reference to productive specialization of all firms".

The rules for defining industrial districts are:

- manufacturing industrial index
- number of entrepreneurs
- productive specialization
- incidence of small firms

## Industrial districts



### Food:

Castel San Giovanni ■

Busseto ■

Fornovo di Taro ■

Langhirano ■

Parma ■

Faenza ■

Lugo ■

### Furnishings:

Castellarano ■

Sassuolo ■

Vignola ■

Forlì ■

Morciano di Romagna ■

### Mechanics:

Fiorenzuola d'Arda ■

Guastalla ■

Reggio Emilia ■

Modena ■

Argenta ■

Cento ■

### Clothing:

Correggio ■

Carpi ■

Mirandola ■

Santa Sofia ■

### Leathers and shoes:

Mercato Saraceno ■

### Hectography:

Rocca San Casciano ■

Unioncamere Emilia-Romagna  
Viale Aldo Moro, 62 - 40127 Bologna  
Telephone +39 051 6377011  
Fax +39 051 6377050  
E-mail: [staff@rer.camcom.it](mailto:staff@rer.camcom.it)  
Internet site: [www.rer.camcom.it](http://www.rer.camcom.it)



Unioncamere Emilia-Romagna

